

UCLA Center for Medieval and Renaissance Studies  
10745 Dickson Plaza, Box 951485  
Los Angeles CA 90095-1485

Presorted  
First Class  
U.S. Postage  
Paid  
UCLA

Image: *Boy bitten by a Lizard*, Michelangelo Merisi da Caravaggio

# Touching Shakespeare: Proximity, Precarity, and Resilience in Renaissance Drama and Modern Life



UCLA Center for Medieval and Renaissance Studies  
Shakespeare Symposium  
Friday, February 13, and Saturday, February 14, 2015

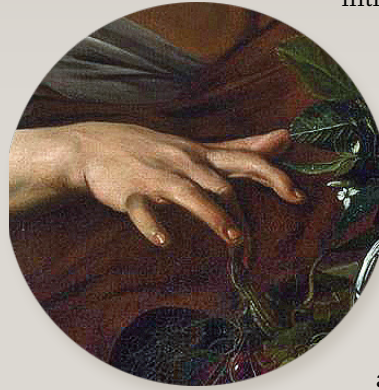
FRIDAY, FEBRUARY 13, 2015 | UCLA ROYCE HALL, ROOM 314

- 1 pm Registration, Coffee
- 1:30 Welcoming Remarks: **Massimo Ciavolella** (UCLA), CMRS Director;  
**Lowell Gallagher** (UCLA); **Julia Reinhard Lupton** (UC Irvine)
- 2:00 **W. B. Worthen** (Barnard College, Columbia University)  
“Remediating OP; or, ‘Shakespeare You Can Throw Beer At’”  
*Moderator: Ian Munro (UC Irvine)*
- 2:45 Break
- 3:00 **David Glimp** (University of Colorado at Boulder)  
“‘Quod Omnes Tangit’: Taxes and the Sense of the Strange in Shakespeare’s *King John*”  
*Moderator: Matthew Smith (Azusa Pacific University)*
- 3:45 Break
- 4:00 **Julian Yates** (University of Delaware)  
“Counting Sheep in the Belly of the Wolf”  
*Moderator: Andrew Griffin (UC Santa Barbara)*
- 4:45 Wrap-up remarks for the day
- 5:00 Reception (Royce 306 Loggia)

SATURDAY, FEBRUARY 14, 2015 | UCLA ROYCE HALL, ROOM 314

- 9:30 am Coffee, Pastries
- 9:45 Opening remarks: **James Kearney** (UC Santa Barbara)
- 10:00 **Aranye Fradenburg** (UC Santa Barbara)  
“Distributed Cognition in Shakespeare’s Sonnets”  
*Moderator: Kent Lehnhof (Chapman University)*
- 10:45 Break
- 11:00 **Allison Deutermann** (CUNY)  
“How to Hear the ‘fatal screech-owl’: Resilient Listening in 3 *Henry VI*”  
*Moderator: Arvind Thomas (UCLA)*
- 11:45 Lunch Break
- 1 pm **Laurie Shannon** (Northwestern University)  
“Hamlet’s Kindness”  
*Moderator: Robert N. Watson (UCLA)*
- 1:45 Break
- 2:00 Roundtable Discussion: **Sara Burdorff** (UCLA); **Peter Cibula** (UC Irvine);  
**Chris Dearner** (UC Irvine); **Christopher Foley** (UC Santa Barbara);  
**James Funk** (UC Irvine); **Kailey Giordano** (UC San Diego); **Christine Gottlieb**  
(UCLA); **Kristen McCants**; (UC Santa Barbara); **Holly Moyer** (UCLA)
- 3:00 Closing Remarks: **Julia Reinhard Lupton** (UC Irvine)

## Touching Shakespeare: Proximity, Precarity, and Resilience in Renaissance Drama and Modern Life



Touch, sensing, and sensation are lively topics in the humanities right now. Touch intimates physical proximity and calls to mind the vulnerable body and the resilient flesh, even as it also carries tacit knowledge of the deep co-implication of physical and imaginative or intuitive aspects of *proximity*. The aim of this conference is to expose sensation to an existential and political triad of terms, by supplementing proximity, the emotional calculus of spatial closeness, with *precarity* — the forms of risk associated with economic, legal, or creaturely disability and interdependence — and with *resilience* — the responsive adaptation and accommodation to the physical and social environment by which individuals cope with precarity.

In Shakespearean drama, the triad of proximity, precarity, and resilience concerns more than the on-going task of building sustainable relations between humans; it also entails recognition of the co-participation of human and nonhuman actors in the making of a habitable world. The plays of Shakespeare are documents of survival, prompts for improvisation, and exercises in pattern recognition with the capacity not only to inform us about the prior histories of proximity, precarity and resilience in relation to the senses, but also to aid us in our ongoing efforts to inhabit the spaces shaped by human effort, technological complexity, and environmental vulnerability today.

**UCLA**

CENTER for MEDIEVAL  
& RENAISSANCE STUDIES

Co-sponsored by UCLA Department of English, UCLA Friends of English,  
and UCI Group for the Study of Early Cultures.

Advance registration not required. No fee.

Limited seating on a first-come first-served basis.

Self-pay parking in lots 2, 3, 4, and 5. More parking information at  
<https://main.transportation.ucla.edu/campus-parking/visitors>

[cmrs@humnet.ucla.edu](mailto:cmrs@humnet.ucla.edu) | 310-825-1880 | [cmrs.ucla.edu](http://cmrs.ucla.edu)